

4-40 x 1/2 Flat head

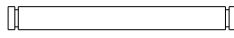


1375 - 4-40 Ball Stud

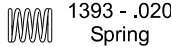
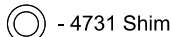
1409 - 4-40 Ball Stud-Red



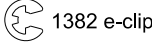
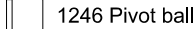
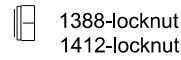
1235 Front axle
4115 Front axle-Ti



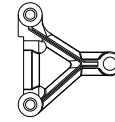
Kingpin - 1250



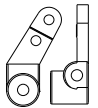
1252-turnbuckle



1247 Lower arm



1242 Upper Arm

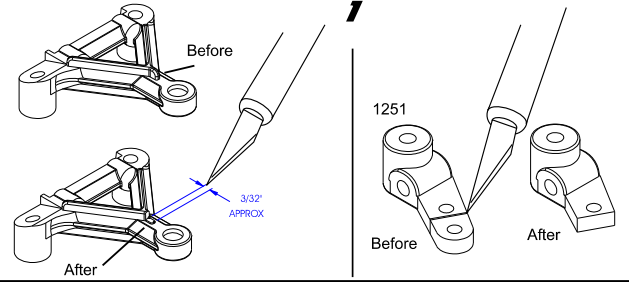


1251
Steering block

1268 Hing Pin

1. TRIM LOWER ARM AND STEERING BLOCKS

Trim the lower arm as shown. This allows the steering block to rotate freely giving clearance to the locknut. Cut and file the steering block (1251) along the molded guide line. Round the corners.

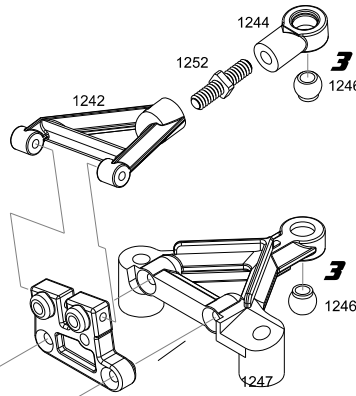


2. MOUNT UPPER ARM MOUNT TO LOWER ARM

Bolt the 1269 (10 degree version) to the 1247 using the screws provided in Bag F.

3. INSTALL THE PIVOT BALLS

Pop the 1246 pivot balls in the 1244 pivot eyelet. Pop the ball in the side of the eyelet that has the bevel or rounded flange. The lip of the ball must point toward the steering block, 1251. Install in the 1247 arm as well.



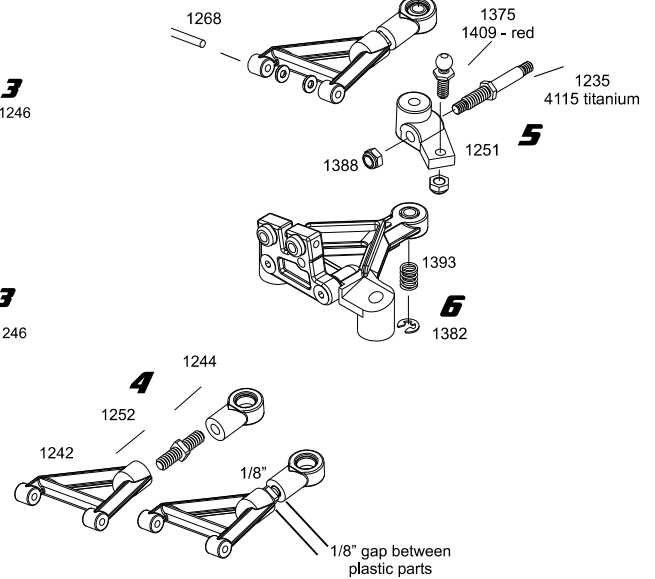
4. Thread the 1242, 1252 and 1244 together. The 1252 turnbuckle has reverse threading on one end. Tighten until there is about 1/8" gap

5. MOUNT THE FRONT WHEEL AXLE

Assemble the 1235 into the 1251 by threading the axle into the steering block. **The axle uses reverse left handed thread into the steering block!** Fix the ball stud to the 1251 with the 4-40 locknut 1388/1412.

6. FULL FRONT SUSPENSION ASSEMBLY

Place a 1382 clip on one end of the 1250 pin. Then place the 1393 spring over the kingpin. From the bottom, slide the 1250 pin up through the 1247 arm, into the 1251 steering block and through the 1244 eyelet. Place 4 shims on top of the 1244 over the kingpin before installing the e-clip to capture the ends of the 1250 kingpin.

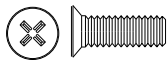


Bag F

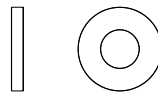
Use as many shims as necessary to remove any up + down play. The clip should slightly preload the spring.

Bag F cont.

1239
8-32 FH Screw

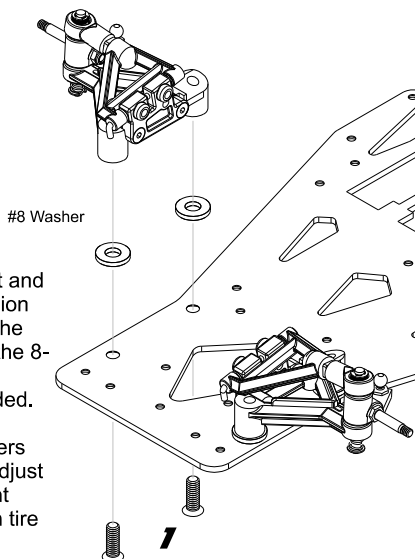


1237
#8 Alum Washer



1. Mount the left and right suspension assembly to the chassis with the 8-32 flat head screws provided.

The #8 washers are used to adjust the ride height depending on tire size.



Bag #6

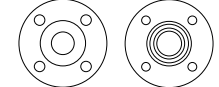
2-56 Button Head



1256 Chrome Pivot Ball
Threaded 4-40



1274 - Plastic pivots



FOOTBALL PIVOT ASSEMBLY

- Trim the plastic pieces with a hobby knife as shown below.
- Assemble the pivot sockets and pivot balls using the 2-56 button head screws. The screw head will be the bottom of the football piece and face toward the chassis when installed.
- The order is; screw through 1372 graphite football, then into lower part of 1274, then the 1256 ball, then the upper "castle" part of the 1274.
- Tighten the 2-56 button heads just so the 1256 pivot ball is free and has no play. Do not tighten so much that this ball binds in the plastic pivot socket.

