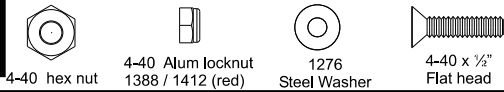


On this page, work from upper left (1) to bottom (2) and then to upper right (3).

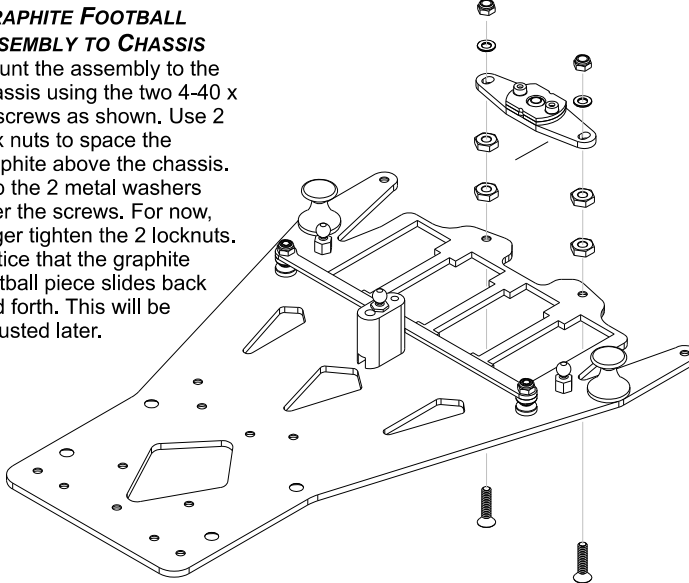
## Bag 6



### GRAPHITE FOOTBALL

#### ASSEMBLY TO CHASSIS

Mount the assembly to the chassis using the two 4-40 x 1/2" screws as shown. Use 2 hex nuts to space the graphite above the chassis. Slip the 2 metal washers over the screws. For now, finger tighten the 2 locknuts. Notice that the graphite football piece slides back and forth. This will be adjusted later.



1

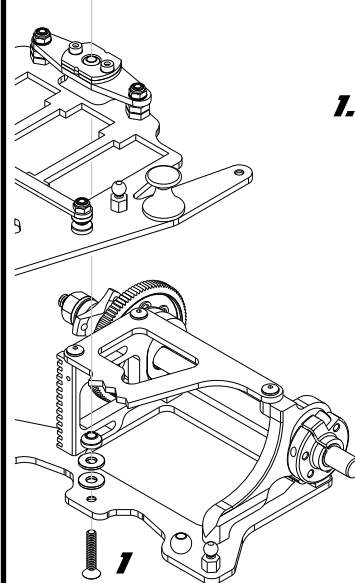
## Bag 6,1



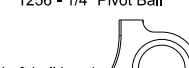
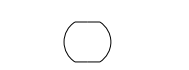
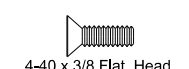
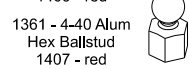
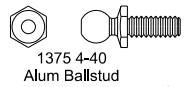
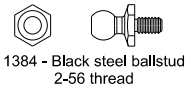
### MOUNT REAR LOWER POD TO CHASSIS

1. With the football assembly fastened to the chassis, line up the rear lower graphite plate. Put the 4-40 x 1/2" screw through the graphite bottom plate in the center hole as shown.

Stack 2 #4 aluminum washers and 1 cone washer (point up) over the screw. Then, thread the screw into the center mono-ball in the football assembly. Tighten using quick turns of the driver. Keep an eye on this screw the first few runs, it tends to loosen until "seated".



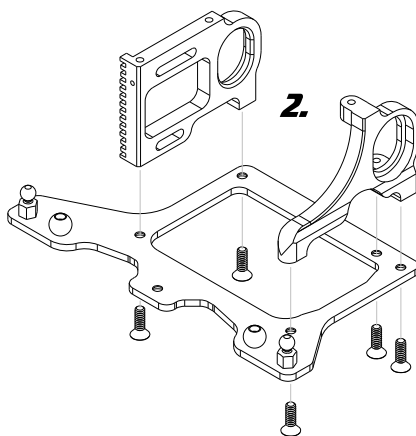
3



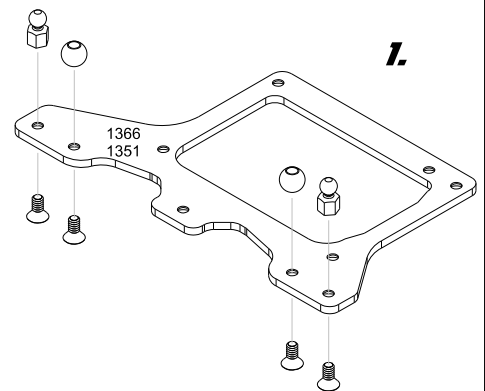
1. Bag 1 - Fasten the hex-ball and 1256 chrome ball to the 1366 (1351 thick) lower rear plate with the short 4-40 x 1/4" screws.
2. Bolt the left bulkhead (4246-red, 1368-std) to the lower plate using three 4-40 x 1/4" flat head screws. Do the same for the right side motor mount plate (4247-red, 1367 std.) Using two 4-40 x 1/4" screws.
3. With the 1365 top plate upside-down on a table, thread in the small black 1384 2-56 balls studs into the 2 small holes. Be sure to be straight and perpendicular to the plate.

Mount the aluminum ballstud (larger) through the single hole near the tip of the 1365 plate. Secure with the 4-40 mini-nut.

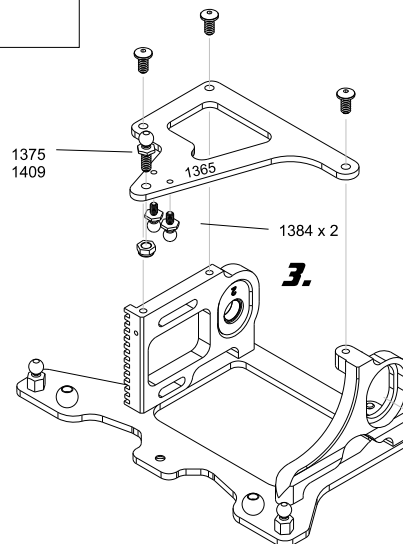
Mount the 1365 graphite top plate to the aluminum motor pods with the 4-40 x 1/4" button head screws.



2.



1.



2

## Bag 1, R + 5