

Assembly



4224
Right Diff Hub



Nylon Diff nut
4126



1386
Flanged Bearing



1387
Plain Bearing



Large "D"
Diff Ring
4201



Diff Spacer
4121



Belleville Spring
Washer - 4123

Lip

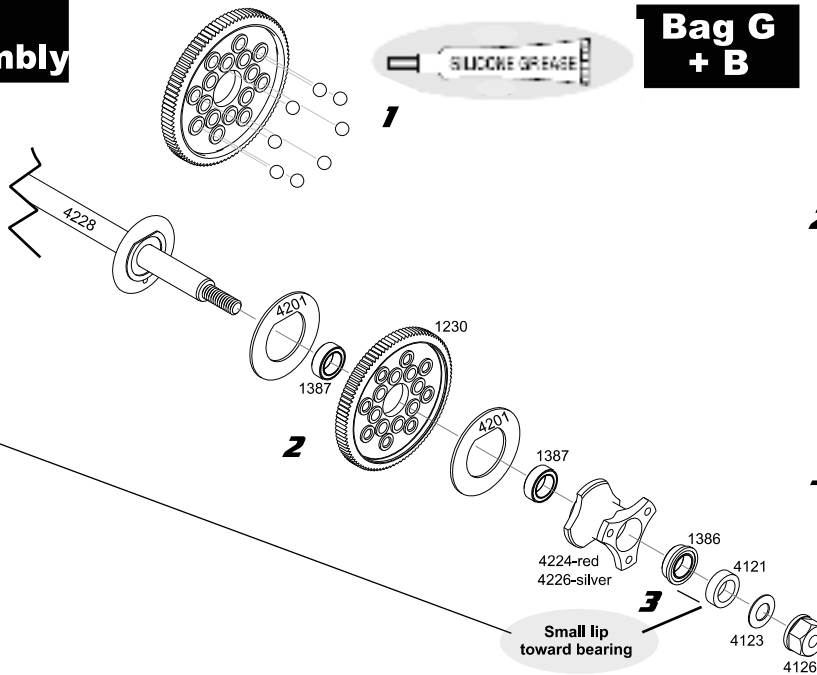
Bag G + B

INSTALL AND GREASE THE DIFF BALLS
Pop the 1/8" diff balls in each of the outer ring of holes in the 1230 diff gear. The balls snap into the socket. Place a small dab of silicone diff grease on each ball. Use very little!

FINAL DIFF ASSEMBLY

2. Hold the 4228 axle upright with the machined "D" cutout facing upward. Place one 4201 ring, and a 1387 plain bearing over the end of the axle. Align the 4201 Ring so that it notches into the axle. Place the assembled gear with the greased diff balls over the axle. Add a second 4201 diff ring, 1387 plain bearing, diff hub, flanged bearing and 4121 diff spacer.

3. The diff spacer has a small machined lip into it, point that toward the bearing. Now, place the 4123, spring washer so that the cone points away from the gear. Then thread the locknut, 4126. Be sure the 2 "D" rings have settled into their notches. Just snug the nut so the parts stay together on the diff axle, later we will correctly adjust the tension on the diff lock nut.

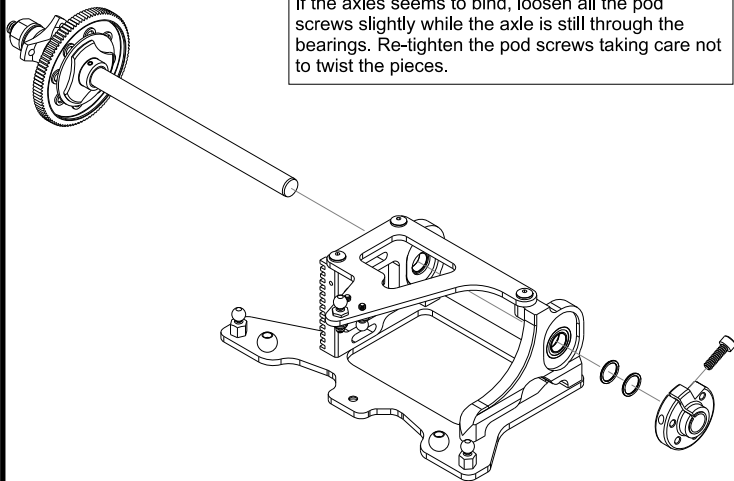


Bag D + B

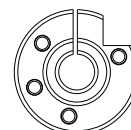
AXLE IN BEARINGS

Slip the axle through the bearings in the rear pod set. The axle should be free and smooth through the bearings.

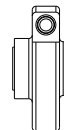
If the axles seems to bind, loosen all the pod screws slightly while the axle is still through the bearings. Re-tighten the pod screws taking care not to twist the pieces.



Bag H



4132 Left Clamp Hub - (silver)



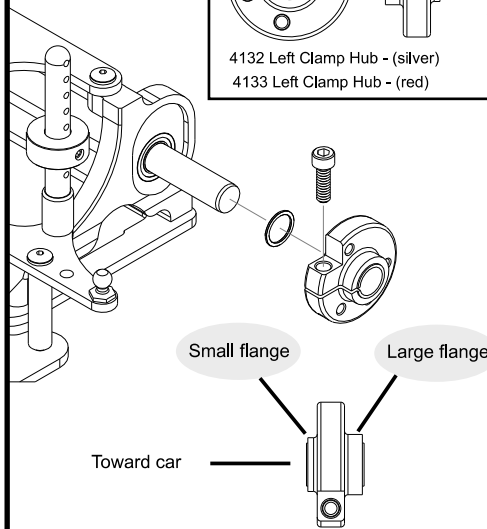
4133 Left Clamp Hub - (red)



5/16 Cap head
41321



1/4" Shim
4732



LEFT WHEEL HUB

On the protruding axle, slip a 4732 shim over the axle. Then slip the hub on with the narrow flange toward the center of the car. The larger flange should face out.

Lock the hub with the cap screw so that the axle has a small amount of side to side play in it. The thickness of 2 sheets of paper is plenty.

The wheel will be mounted to this hub later.